

OBSERVATIONS ON BRITISH COCCIDAE IN 1914,
WITH DESCRIPTIONS OF NEW SPECIES.

BY E. ERNEST GREEN, F.Z.S., F.E.S.

(PLATES XV—XVII).

I recently published in this Magazine (Vol. L, p. 197, 1914) the description of a new British Coccid, under the name of *Kuwania britannica*. I have since received, from Prof. T. D. A. Cockerell, photomicrographs of *Steingelia gorodetskia* of Nasonow, which have convinced me that my insect is identical with that species. I still maintain, however, that the species should be included in the genus *Kuwania*. The only possible excuse for separation is the number of antennal joints, which is 8 in *Steingelia gorodetskia*, and 9 in typical species of *Kuwania*. This difference appears to me to be of scarcely more than specific value or, at the most, might warrant the erection of a sub-genus. If this view is accepted, the name should now stand as *Kuwania (Steingelia) gorodetskia* (Nasonow).

Nasonow's specimens were taken in Russia, and this is the only locality quoted. The discovery of the insect in England is, therefore, still of considerable interest. It remains an addition to the British fauna, although its claim to scientific novelty must be abandoned.

ERIOCOCCUS DEVONIENSIS *Green*.

In the same paper I mentioned finding an *Eriococcus* on *Erica* that would probably prove to be *devoniensis*, hitherto recorded only from Budleigh Salterton. This supposition has turned out to be correct. At the time immature and early adult females only had been found. Even in this stage the characteristic distortion of the stems of the affected plants was noticeable. In fact, it was only by this symptom that the presence of the insect was detected. The white ovisacs were not commonly noticeable until well into September. The insect occurred both on the wild *Erica cinerea* and upon allied cultivated forms in gardens. In the latter case the insect was a veritable pest, some plants being so thickly infested that they had to be destroyed.

The nymphal insect is of a bright golden yellow colour, with glistening, short, glassy filaments. In the final stage the colour deepens to orange-red. In my Surrey examples all the dorsal spines are rather more acuminate than those of typical examples from Devonshire, in which the larger spines are markedly truncate.

Males commenced to appear towards the end of August. They are of the form normal to the genus, of a brownish purple colour, with a pair of long white caudal filaments. Antenna 10-jointed, 3rd joint longest, longer than preceding two joints together; subsequent joints decreasing in size to the tenth, which is the shortest. Apical half of terminal joint dense and opaque, with from four to five stout curved spines at its extremity; one or two long and slender knobbed hairs on each joint with the exception of the 1st and 2nd.

ERIOCOCCUS INSIGNIS Newst.

Occurs commonly on grasses (usually *Agrostis* sp.) in the Camberley district.

ERIOCOCCUS GREENI Newst.

This species, which was described from a single example taken at Budleigh Salterton in 1896, has now turned up at Camberley, where it occurs not uncommonly, in association with *E. insignis*. Owing to the difficulty (noted by Newstead) of distinguishing between the ovisacs of the two species, it is probable that *E. greeni* may be frequently overlooked. The ovisac of *greeni* appears to me to be proportionately slightly broader and rougher than the other. I find also that this species shows a distinct preference for constructing its ovisacs upon dry fallen leaves. The insects themselves are readily distinguishable by the arrangement of the spines, which in *greeni* are scattered thickly and more or less evenly over the dorsum, while in *insignis* they are confined to the margin where they form a conspicuous fringe. Newstead describes the type as having 6-jointed antennae, the 3rd joint very long. In my examples I find that the antennae are normally 7-jointed, the 3rd and 4th being longest and approximately equal. In only a single example have I found the typical 6-jointed form.

ERIOCOCCUS INERMIS nov.

Adult female elongate oval (fig. 1-a). Derm without spines, except on the anal lobes; but closely set with conspicuous thick-rimmed pores opening into tubular ducts (fig. 1-c), and some inconspicuous spiniform hairs. Anal lobes prominent; each lobe with a longish stout apical seta and two stout spines on its inner margin. Anal ring with eight stout setae extending almost to the extremity of the lobes. Legs moderately large; tarsus equal to or slightly longer than tibia; claw without denticle; digitules hair-like, dilated at extremity. Antenna (fig. 1-b) 6-jointed, the 3rd very long and usually broader than the 2nd; other joints short. Occasionally there is an incomplete division in the 3rd joint. Antennal formula 3, 6, 2(4, 5). Length ranging from 1.50 to 2.50 mm.; breadth from 0.75 to 1.20 mm.; average of fourteen examples, 1.97 by 0.94 mm.

LEPIDOPTERA, Coleoptera, and other Orders of Insects for Sale; Catalogues on application. Now ready, general Catalogue—Lepidoptera and Coleoptera; special list Splingidae, over 300 species. Collections purchased.—
E. LE MOULT, 4, Rue Duméril, Paris XIII^e.

CHANGE OF ADDRESS.

H. BRITTEN, *from* 2, Hope Villas, *to* Myrtle View, Windmill Road, Headington, Oxon.

Authors are requested to send their communications and proofs to either
J. J. WALKER, Aorangi, Lonsdale Road, Summertown, Oxford; or
G. C. CHAMPION, Horsell, Woking.

Those relating to Diptera, to

J. E. COLLIN, Sussex Lodge, Newmarket.

AUTHORS requiring separate copies of their papers (which can be supplied at small cost) are requested to mark the number wanted on their MS.

WATKINS & DONCASTER, Naturalists,

Keep in stock all Articles for Entomologists, Ornithologists, Botanists, &c.: Umbrella Net, 7/-; Folding Cane or Wire, 3/6, 4/-, 4/6; Plain Ring Net, 1/3, 2/-, 3/-; Pocket Boxes, 6d., 9d., 1/-, 1/6; Store Boxes, with Camphor Cells, 2/6, 3/6, 4/-, 5/-, 6/-; Zinc Pocket Boxes, 9d., 1/-, 1/6, 2/- Setting Boards, from 5d. to 1/10; Complete set of 14 boards, 10/6; Breeding Cages, 2/6, 4/-, 5/-, 7/6; Sugaring Tins, 1/6, 2/-; Sugaring Mixture, ready for use, 1/9 per tin; Setting Houses, 9/6, 11/6, 14/-; Glass Topped and Glass Bottomed Boxes, from 1/- per doz.; Zinc Killing Boxes, 9d., 1/-; Coleoptera Collecting Bottles, 1/6, 1/8; Collecting Box, containing 26 tubes (very useful for Coleopterists, Microscopists, &c.), 4/6; Brass Chloroform Bottle, 2/6.

Improved Pocket Pupa-digger in leather sheath (strongly recommended), 1/9; Steel Forceps, 1/6 to 3/- per pair; Pocket Lens, from 1/6 to 8/6.

Taxidermists' Companion, containing most necessary implements for skinning, 10/6; Scalpels, with ebony handles, 1/3; Fine Pointed Scissors, 2/- per pair; Brass Blow-pipes, 4d., 6d.; Egg Drills, 2d., 3d.; ditto, best quality, 9d. each; Botanical Vasculum, 1/6, 2/9, 3/6, 4/6; Label List of British Macro-Lepidoptera, with Latin and English Names, 1/6; List of British Lepidoptera (every species numbered), 1/-; or on one side for Labels, 2/-.

SILVER PINS FOR COLLECTORS OF MICRO-LEPIDOPTERA, &c.,
as well as minute insects of all other families.

We stock various sizes and lengths of these Silver Pins, which have certain advantages over the entomological pins usually employed.

For instance, insects liable to become greasy and verdigrisy, like Sesiidæ, are best pinned on Silver pins, which will last much longer than the ordinary pins (whether enamelled black, or gilt, or silvered).

We shall be pleased to send pattern cards on application.

A large stock of British, European, and Exotic Lepidoptera,
Coleoptera, and Birds' Eggs.

ENTOMOLOGICAL PINS.

The "DIXON" LAMP NET (invaluable for taking Moths off street lamps without climbing the lamp posts), 3s. 6d.

SHOW ROOM FOR CABINETS, &c.

36, STRAND, LONDON, W.C., ENGLAND.

Birds and Mammals, &c., Preserved & Mounted by first-class workmen.

Our New Price List (100 pp.) sent post free to any address on application.

CONTENTS.

	PAGE.
Notes on <i>Xanthia</i> (<i>Mellinia</i>) <i>ocellaris</i> Borkh. (<i>continued</i>).— <i>H. Worsley Wood</i> ...	153
Studies in Helophorini (5).— <i>D. Sharp, M.A., F.R.S.</i>	156
Description of a new species of <i>Coelorrhina</i> (<i>Cetoniidae</i>).— <i>O. E. Janson, F.E.S.</i>	163
Ten new British Diptera (<i>Nematocera</i>).— <i>F. W. Edwards, F.E.S.</i> ...	164
On the food-plants of some British weevils.— <i>F. B. Jennings, F.E.S.</i>	167
<i>Hypophloeus linearis</i> F., in the New Forest.— <i>D. Sharp, M.A., F.R.S.</i>	169
<i>Euthia fornicetorum</i> Reitt., in the Oxford district.— <i>James J. Walker, M.A.</i> <i>R.N., F.L.S.</i>	169
<i>Aëpophilus bonnairei</i> Sign., at Sennen Cove— <i>J. R. le B. Tomlin, M.A., F.E.S.</i>	169
<i>Vanessa antiopa</i> in Northern France.— <i>William H. Tapp</i> ...	170
<i>Thera variata</i> Schiff., in S. W. Surrey.— <i>E. G. R. Waters, M.A.</i>	170
A note on the oviposition of <i>Simulium maculatum</i> Mg.— <i>H. Britten, F.E.S.</i> ...	170
SOCIETIES.—Lancashire and Cheshire Entomological Society... ..	171
South London Entomological Society	172
London Natural History Society	173
Observations on British Coccidae in 1914, with descriptions of new species.— <i>E. Ernest Green, F.Z.S., F.E.S.</i>	175

A SYNOPSIS OF THE BRITISH SIPHONAPTERA, by the
 Hon. N. CHARLES ROTHSCHILD, M.A., F.L.S., illustrated by Eight Plates
 (issued in the Ent. Mo. Mag. for March, 1915, pp. 49-128), price 1s. 6d. Apply to
 the publishers.

THE SIX COLOURED PLATES illustrating the articles on
 "SOME INTERESTING BRITISH INSECTS,"
 with the accompanying text (issued in the Ent. Mo. Mag. for September, 1909,
 January and September, 1910, September, 1911, and August, 1913), are issued
 in a separate wrapper, price 2s. 6d.
 APPLY TO THE PUBLISHERS.

FOR SALE.

16 NATURAL HISTORY CABINETS.

BELONGING TO THE LATE DR. MASON,

ALSO

FOUR MICROSCOPICAL CABINETS.

Containing Microscopical Slides by G. R. YINE, of Sheffield.

ALSO

400 BRITISH BIRDS IN CASES.

Apply—Mrs. MASON, TRENT HOUSE, BURTON-ON-TRENT.

Third Series, No. 6.]
[No. 613.]

JUNE, 1915.

[PRICE 6d. NET

THE
ENTOMOLOGIST'S
MONTHLY MAGAZINE.

EDITED BY

G. C. CHAMPION, F.Z.S. J. E. COLLIN, F.E.S.

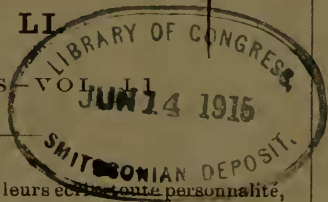
W. W. FOWLER, D.Sc., M.A., F.L.S.

R. W. LLOYD, F.E.S. G. T. PORRITT, F.L.S.

J. J. WALKER, M.A., R.N., F.L.S.

VOLUME LI

[THIRD SERIES—VOL. LI



“J’engage donc tous à éviter dans leurs écrits toute personnalité, toute allusion dépassant les limites de la discussion la plus sincère et la plus courtoise.”—*Laboulbène*.

LONDON :

GURNEY & JACKSON (MR. VAN VOORST’S SUCCESSORS),
33, PATERNOSTER ROW, E.C.

NAPIER, PRINTER, SEYMOUR STREET, EUSTON SQUARE.

REDUCED PRICES FOR BACK VOLUMES.

FIRST SERIES.

This can only be obtained in complete Volumes (bound or unbound)

A limited number of sets, from Vol. x to Vol. xxv can still be obtained at £2 15s. per set net (in parts), or of five consecutive Vols at £1 per set net (if bound, 1s. per Vol. extra).

Certain of the Vols. i to ix can be had separately at 10s. each.

SECOND SERIES.

Vols. i to xv. are now offered at £3 per set net (in parts), or £1 2s. 6d. for five consecutive Vols. (if bound, 1/- per Vol. extra).

Apply to the Publishers.

NOTE.—Subscriptions for 1915 (6s. per annum, post free) are now due, and should be paid to R. W. LLOYD, I. 5, Albany, Piccadilly, London, W.

MEETINGS OF SOCIETIES.

ENTOMOLOGICAL SOCIETY OF LONDON, 11, Chandos Street, Cavendish Square, W. — Wednesdays, June 2nd, October 6th and 20th, November 3rd and 17th, December 1st, 1915. January 13th (ANNUAL MEETING), February 2nd, 1916.

The Chair will be taken at 8 o'clock in the evening precisely.

The Library is open daily from 9 a.m. to 6 p.m. (except on Saturdays, when it is closed at 2 p.m.), and until 10 p.m. on Meeting nights.

THE SOUTH LONDON ENTOMOLOGICAL AND NATURAL HISTORY SOCIETY, Hibernia Chambers, London Bridge. The Second & Fourth Thursdays in each month, at 8 p.m. The lantern will be at the disposal of Members for the exhibition of slides.

THE LONDON NATURAL HISTORY SOCIETY which meets at 7 p.m. on the 1st and 3rd Tuesdays in each month, at Room 20, Salisbury House, Finsbury Circus, E.C., will be glad to welcome at its Meetings any French or Belgian entomologists now staying in this country, and to give them the benefit of its library and collections. Communications should be addressed to the Secretary; Salisbury House, E.C.

June 1st—"The Treatment of Nature in Gothic Design," Miss F. BAGUST.

Hon. Sec.: J. Ross, 18, Queen's Grove Road, Chingford, N.E.

Arrangements have been made by the Lepidoptera Committee of the above Society for a Member of the Committee to attend at Salisbury House at 6.30 p.m. on Meeting Nights (1st and 3rd Tuesdays in each month, except July and August), for the purpose of giving advice and assistance to young entomologists, whether members of the Society or not. A cordial welcome will be extended to any who care to avail themselves of this arrangement.

Woodford Branch. Meetings are held at the Wilfrid Lawson Hotel, Woodford Green, at 8 p.m., on the last Monday in each month. Room open at 7.30.

Chingford Branch. The Chingford Local Branch meets at the Avenue Café, opposite Chingford Station, at 8 p.m., on the 2nd Friday in each month.



FIG. 2.

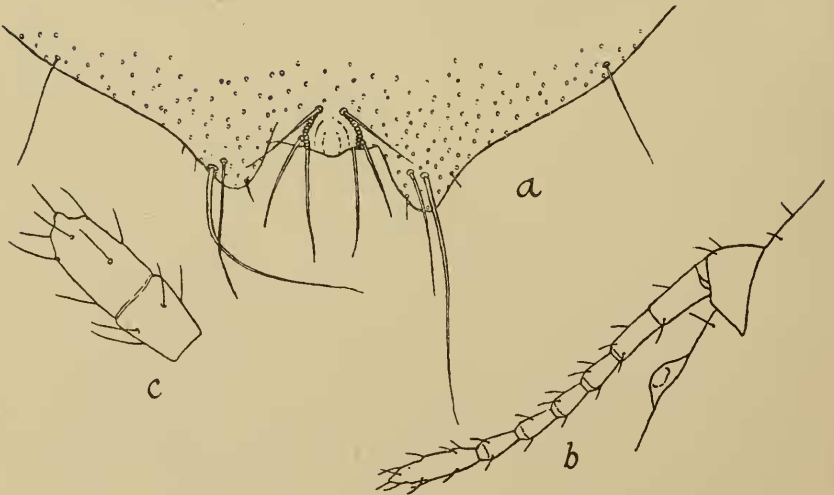


FIG. 3.

E. E. Green, del.

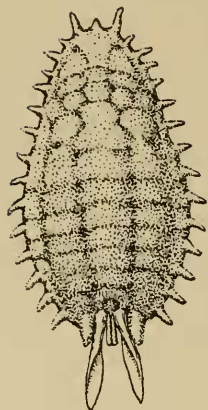


FIG. 4.



FIG. 5.

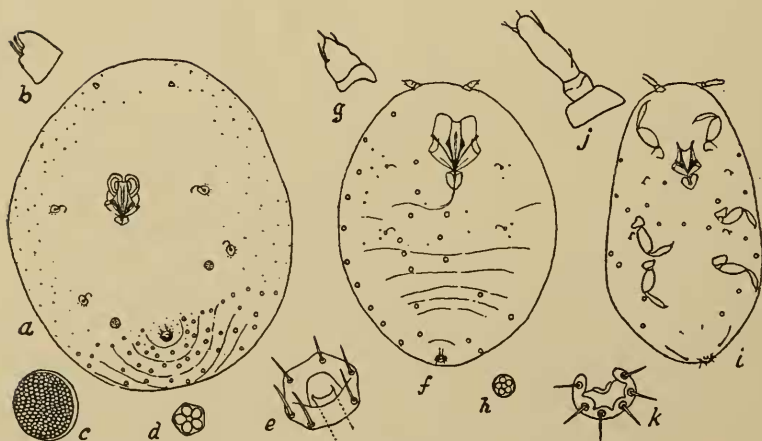


FIG. 6.

E. E. Green, del.

